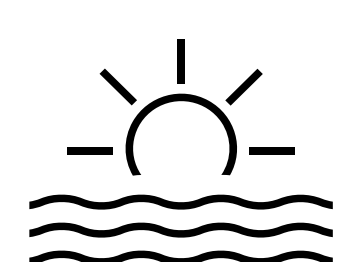


2nd Edition of Econom'IA Workshop !



At EconomiX
Université Paris Nanterre
Nanterre, France

May 19, 2025 **Graph Analysis**



Morning Training

8:45am to 9:15am: Welcome greetings

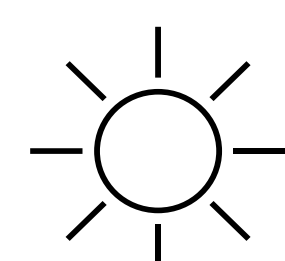
9:15pm to 9:30pm : Nadine Levratto, *director of EconomiX*

9:30am to 12:30am (including a break):

Textual Graph Analysis with CorText

Speaker: Lionel Villard (director of CorText platform)

12:30pm to 2pm: Lunch



Afternoon Presentations

2:00pm to 3:00pm : Key-note speaker **César Hidalgo**
(Research director, ANITI, Toulouse University)

Economic Complexity: How Machine Learning is Helping us Understand Economic Development.

3:00pm to 3:40pm : **Guillaume Hollard** (Centre de Recherche en Économie et Statistique (CREST), École Polytechnique Université Paris Saclay) and **Gwen-Jiro Clochard** (Osaka University)

What Really is in Phone Data? Matching Census and Mobile Phone Data in Senegal.

3:40pm to 4:00pm : Pause

4:00pm to 4:40pm : **Robin Meneust** and **Benoît Couderc** (CY Tech)

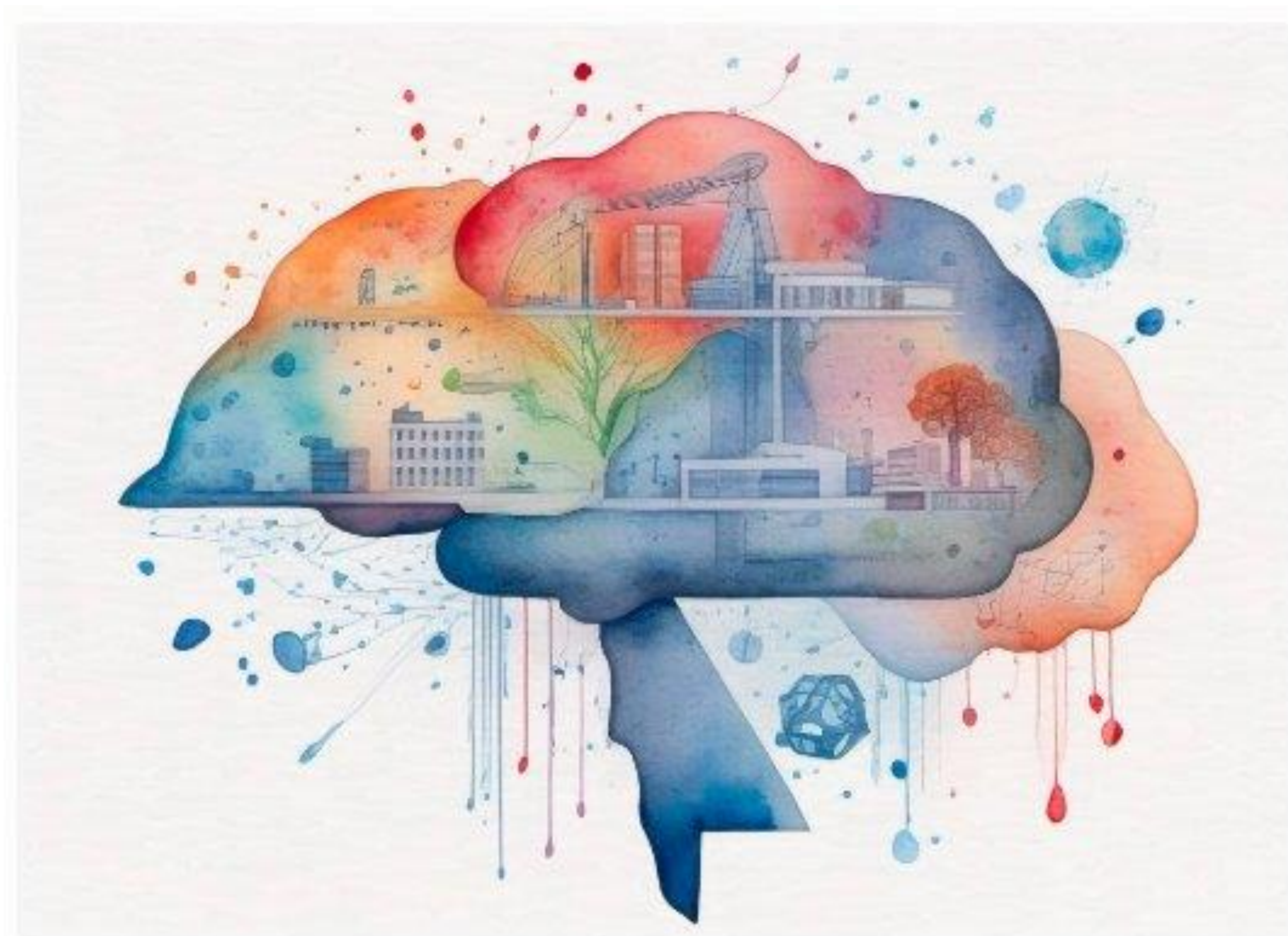
Author Name Disambiguation of Bibliographic Data Based on Machine Learning Models Applied to PhD Thesis Matching Case Study.

4:40pm to 5:20pm : **Fabienne Llense** (EconomiX, Université Paris Nanterre, CNRS) and **Mathieu Bernard** (CNRS)

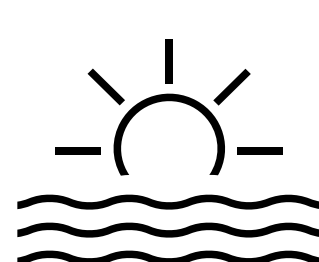
Environmental and climate mandatory disclosure: a paper tiger? Evidence from France.

5:20pm to 6:00pm : **Olivier Caron** and **Christophe Benavent** (Dauphine Recherches en Management (DRM), Université Paris Dauphine-PSL, CNRS)

Public Reaction to Pharmaceutical Preannouncements on Social Media: A Signaling Perspective.



May 20, 2025 **LLM Analysis**



Morning Training

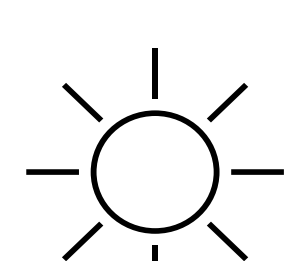
8:45am to 9am: Welcome greetings

9am to 12:30am (including a break):

Use of LLMs

Speaker: Gaël Lejeune (Associate Professor in Computer Science at the Faculty of Arts of Sorbonne University)

12:30pm to 2pm: Lunch



Afternoon Presentations

2pm to 3pm : Key-note speaker **Christophe Benavent**
(Professor at Paris Dauphine - PSL)

AI, LLM and social sciences: a methodological perspective.

3pm to 3:40pm : **Maria Manera** and **Francesco Quatraro**
(University of Turin, Bureau of Research on Innovation Complexity and Knowledge (BRICK))

Mapping European Circular Economy Patents Using Deep Learning Models

3:40pm to 4pm : Pause

4pm to 4:40pm : **Josep Domenech** and **Pablo De Pedraza**
(Universitat Politècnica de València (UPV))

Using AI for Evaluating Public Policy Communication: Insights from the Comunitat Valenciana Case Study.

4:40pm to 5:20pm : **François Lafont** (Centre d'Economie et de Sociologie Rurales Appliquées à l'Agriculture et aux Espaces Ruraux (CESAER)) and **Eulalie Saïssset** (Centre de Recherche sur les Inégalités Sociales (CRIS), Sciences Po Paris)

Contested Ground: Exploring Land Use Conflicts in France.

5:20pm to 6:00pm : **Del Puente Francesco** (Parthenope, Italy), **Yanhong Jin** (Rutgers University, US), **Alessandro Sapiro** (Parthenope, Italy) and **Carl Pray** (Rutgers University, US)

Assessing the impact of a European Union's policy on Agricultural Innovation in Italy.



Direction de la recherche
et des études doctorales

